

THE LANCET

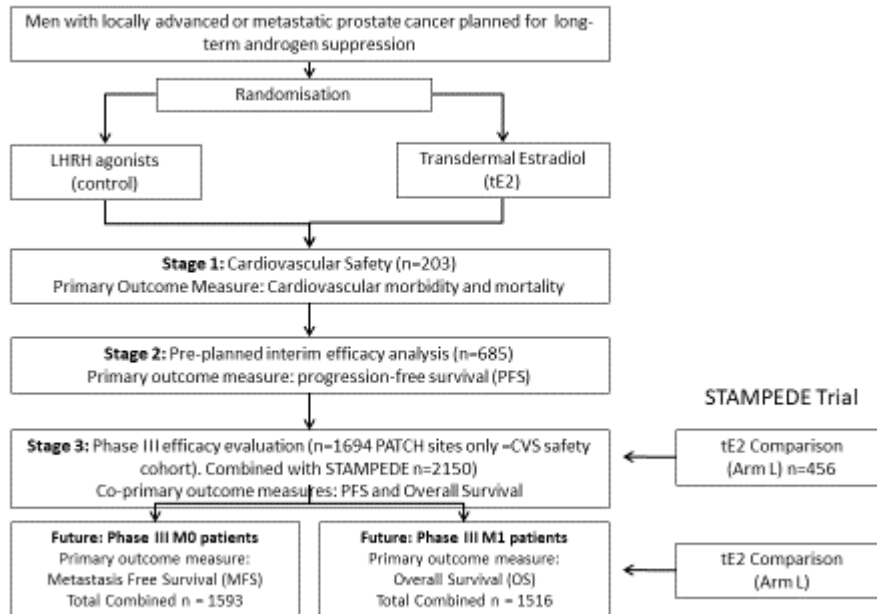
Supplementary appendix

This appendix formed part of the original submission and has been peer reviewed. We post it as supplied by the authors.

Supplement to: Langlely RE, Gilbert DC, Duong T, et al. Transdermal oestradiol for androgen suppression in prostate cancer: long-term cardiovascular outcomes from the randomised Prostate Adenocarcinoma Transcutaneous Hormone (PATCH) trial programme. *Lancet* 2021; **397**: 581–91.

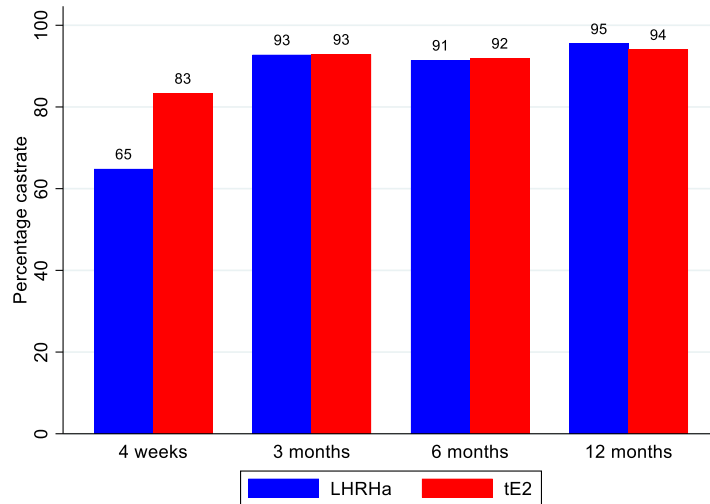
Appendix tables.

Supplementary Figure 1 PATCH Development Programme



Castration rates

Castration rate ($\leq 1.7\text{nmol/L}$) by treatment arm, up to 12 months



1. Patients included in analysis at 4 weeks (LHRHa 640, tE2 793); 3 months (693 LHRHa, 776 tE2); 6 months (633 LHRHa, 683 tE2); 12 months (511 LHRHa, 540 tE2).

2. Data are included if tests are conducted at 4 weeks \pm 2 weeks, and at 3, 6 and 12 months \pm 6 weeks and patient still on allocated treatment

Oestradiol levels (pmol/L) over time.

Month	LHRH				tE2			
	N*	Median	5% - 95%	Min - Max	N*	Median	5% - 95%	Min - Max
1	675	70	18 - 124	0.4 - 578	823	845	376 - 2280	251 - 5424
3	690	70	18 - 100	0.4 - 503	789	723	334 - 1996	250 - 5627
6	628	70	18 - 100	2 - 496	692	776.5	356 - 2080	252 - 5299
12	526	70	18 - 100	1 - 440	570	820.5	397 - 2239	261 - 6200
18	394	70	18 - 100	3 - 1416	434	795.5	372 - 2087	267 - 4753
24	345	70	18 - 100	18 - 306	360	819	371 - 2183	261 - 3908
30	120	70	18 - 100	18 - 167	279	802	369 - 2001	250 - 3245
36	80	70	18 - 104	18 - 117	204	812	381 - 1677	252 - 3458

*N includes patients still receiving their randomly allocated treatment at the time of assessment. For tE2 patients, oestradiol levels needed to be at least 250 pmol/L.

Overall CV event/sudden deaths over time, by metastatic status and docetaxel use

	LHRH (N=790)	Patches (N=904)
Overall rate		
By 12 months	2.8% (1.8%, 4.2%)	2.8% (1.9%, 4.2%)
By 24 months	5.3% (3.8%, 7.3%)	6.4% (4.8%, 8.4%)
By 36 months	7.2% (5.4%, 9.6%)	8.0% (6.2%, 10.4%)
All M0 patients		
By 12 months	2.3% (1.2%, 4.2%)	2.5% (1.4%, 4.2%)
By 24 months	3.6% (2.2%, 5.9%)	5.2% (3.6%, 7.7%)
By 36 months	5.9% (3.9%, 8.9%)	6.6% (4.6%, 9.3%)
All M1 patients		
By 12 months	3.4% (1.9%, 6.3%)	3.4% (1.9%, 6.1%)
By 24 months	8.0% (5.2%, 12.2%)	8.5% (5.7%, 12.6%)
By 36 months	9.3% (6.1%, 13.9%)	10.8% (7.4%, 15.5%)
M1 patients, no Docetaxel		
By 12 months	4.4% (1.5%, 13.2%)	6.1% (2.3%, 15.4%)
By 24 months	7.8% (3.3%, 17.8%)	6.1% (2.3%, 15.4%)
By 36 months	7.8% (3.3%, 17.8%)	12.7% (5.5%, 27.8%)
M1 patients, Docetaxel		
By 12 months	1.4% (0.2%, 9.3%)	0.0% (NA)
By 24 months	7.0% (2.2%, 21.1%)	7.9% (3.0%, 20.0%)
By 36 months	7.0% (2.2%, 21.1%)	7.9% (3.0%, 20.0%)

PATCH committee members

Committee	Current/former member	Name	Institution
Trial management group	Current	Ruth Langley	MRC Clinical Trials Unit at UCL
		Duncan Gilbert	MRC Clinical Trials Unit at UCL
		Matthew Nankivell	MRC Clinical Trials Unit at UCL
		Archie Macnair	MRC Clinical Trials Unit at UCL
		Silvia Forcat	MRC Clinical Trials Unit at UCL
		Melanie Weiss	MRC Clinical Trials Unit at UCL
		Cindy Goldstein	MRC Clinical Trials Unit at UCL
		Will Hudson	MRC Clinical Trials Unit at UCL
		Abdulla Alhasso	Beatson West of Scotland Cancer Centre
		Noel Clarke	The Christie and Salford Royal, Manchester
		Roger Kockelbergh	Leicester General Hospital
		Howard Kynaston	Cardiff University Medical School
		Stuart D Rosen	National Heart and Lung Institute, Imperial College
		Stephen Mangar	Charing Cross Hospital
		Mahesh Parmar	MRC Clinical Trials Unit at UCL
		John Marshall	Patient and Public Representative
John V Deighan	Patient and Public Representative		
Former	Paul Abel	Charing Cross Hospital, London	
	Trinh Duong	MRC Clinical Trials Unit at UCL	
Trial Steering Committee	Current	Jeremy Whelan	University College London Hospitals Trust
		John Chester	University of Cardiff
		Emma Crosbie	University of Manchester
		Ann Thomas	University of Leicester
		Lucy Kilburn	Institute of Cancer Research
		Anne Russell	Patient and Public Representative
Independent Data Monitoring Committee	Current	Laurence Collette	European Organisation for Research and Treatment of Cancer (EORTC)
		Richard Adams	Velindre Cancer Centre
		Philip Smith	Retired urologist
MRC CTU at UCL staff	Former	Trinh Duong	Project Lead
		Fay Cafferty	Project Lead
		Charlotte Tyson	Trial Manager
		Andy Welland	Trial Manager

		Ben Spittle	Trial Manager
		Phil Pollock	Trial Manager
		Lisa McDonald	Trial Manager
		Montse Wells	Trial Manager
		Gordana Jovic	Statistician
		Suzanne Freeman	Statistician
		Rachel Morgan/Jinks	Statistician
		Katherine Beaney	Data Manager
		Robin Carpenter	Data Manager
		Vicky Tsipouri	Data Manager
		Mark Hall	Data Manager
		Katharina Waneck	Data Manager
		Hassan Khan	Data Manager
		James Pickering	Data Manager